



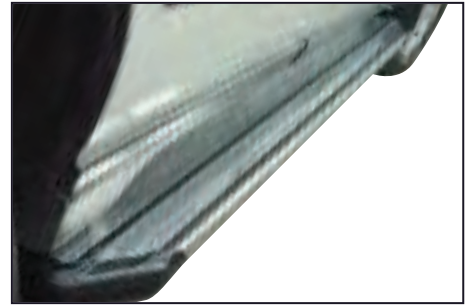
Range Rover

P38

Side Step

The step has a polished stainless steel plate, with an aluminium under construction. Rubber anti-slip strips ensure safer exit and entry to the vehicle. TUV approved.

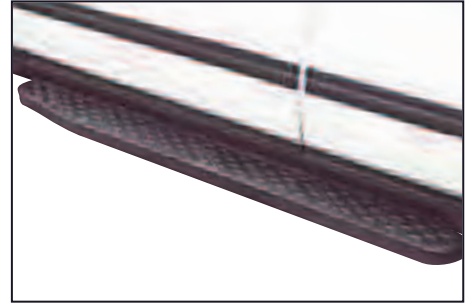
BA 134 Stainless Steel P38



Side Step

Dimpled tread pattern for non-slip surface. The sturdy steel frame is galvanised and encased in rubber for the ultimate durable finish. No drilling required.

BA 111 Rubber Encased P38



Sports Bars

This contemporary design incorporates an aerodynamic cross-bar and end supports, virtually eliminating all wind noise. Easy to install tighten 4 locking bolts and you're done. A built-in buffer strip protects the load and cross bar. Manufactured from injection moulded glass filled composites and extruded aluminium, light, strong and totally rust free.

BA 3094 Gutter Mount P38



Headlamp Guards

These lamp guards are supplied as original equipment. They are manufactured in high density plastic. Supplied with all fittings.

STC8503AA Pair P38



Lamp Guards

These lamp guards are supplied as original equipment. They are manufactured in high density plastic. Supplied with all fittings.

STC8504AA Rear Pair P38



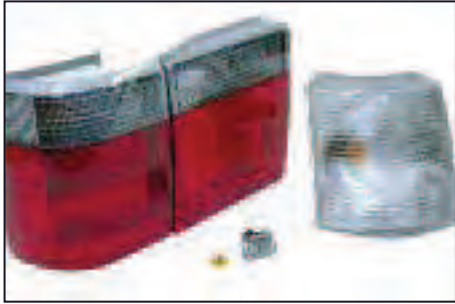


Perspex Weather Shields

Made from perspex, easily fits to both doors, to help stop rain penetration when on the move. Reduces draughts yet still allows good ventilation. (Image shows similar product fitted to Freelander)

BA 3140

P38



Bi-Chromatic Conversion Kit

Kit contains - Tail lights x4, Side Repeaters and Bulbs x2, and front indicators.

BA 5150

P38



Towbar Electric Kit

N-Type towbar electric kit which connects to the vehicles existing plug.

BA 5540

P38



Performance Chip (Power +25HP - Torque +45Nm)

Power upgrade chip for diesel engine. Easy to fit, just plug in and drive away. Benefit from improvements to power, torque and efficiency

BA 2174

P38 2.5TD/DSE



Air Spring Conversion Kit

This air suspension to coils conversion kit for the P38 replaces the original air suspension with the famous Bearmach Blue Coil Springs. The benefits are: Avoids costly repairs - Offers a more reliable system - The ability to fine tune your suspension both in terms of dampers and coils to suit your particular requirement. Once fitted with our air spring conversion kit you can be assured of totally reliable performance.

Kit Contains:

- | | |
|--------------------------------------|---------------------|
| 1 x Electric Harness | 4 x Seat Springs |
| 1 x Pair Rear Bearmach Blue Springs | 1 x Fitting Kit |
| 1 x Pair Front Bearmach Blue Springs | 2 x Front Isolators |

BA 2227

P38

Stainless Steel Exhaust (from CAT back)

This stainless steel exhaust will improve overall performance of V8 Range Rover engines. Slightly more expensive than a standard exhaust but well worth the initial expense. (Picture of sports system with twin tail-pipes)

BA 2190	Single Pipe	P38 (V8 4.0/4.6)
BA 2191	Twin Pipe	P38 (V8 4.0/4.6)
BA 2191A	Sports - with finishing pipes	P38 (V8 4.0/4.6)



Camshaft

Designed to increase engine power

BA 2187		P38 (V8 4.0/4.6)
----------------	--	------------------



Polyurethane Bush Kit

The fitment of Bearnach Polyurethane bushes has been developed to give more positive location at pivot or fulcrum points. These suspension components are particularly recommended if you regularly tow or carry heavy loads. The urethane elastomers used have the versatility and elasticity of rubber yet with the advantages of rigid plastic and metals.

BA 2074	Bush Kit	P38
RBX101340P	Panhard Rod	P38



Performance Brake Pads

No Squealing - Less wear on brake discs - 30% Improvement in braking performance. All pads are supplied in sets all fitted with anti-squeal pads and sensor wires (which may be removed if not required)

BA 2195	STC1879K - Rear	P38
BA 2196	STC1880K - Front	P38

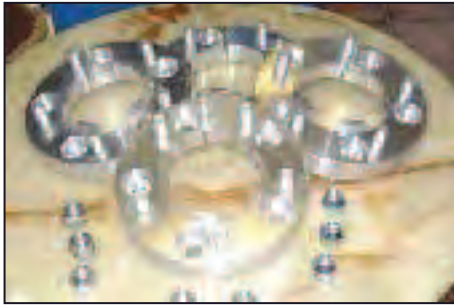


Slotted and Drilled Brake Disc

These ultra heavy duty discs offer additional durability and improved stopping power. Designed with police, ambulance and military in mind these brake discs are directly slotted and cross drilled (left/right) : Increases pad bite - Reduces fade - Delivers exceptional braking performance

BA 2206	NTC8780S - Front Vented	P38
BA 2207	NTC8781S - Rear Solid	P38





Wheel Spacers

Kit of 4 spacers in alloy with all nuts and studs

BA 3408

30mm

P38



A.R.B. Air Lockers Diffs

A manually lockable differential which is operated at the driver's discretion by the push of a button. Locking and unlocking of the "diff" is extremely rapid and can be achieved at any vehicle speed. Installation involves bolt in replacement of the original equipment differential centre, an air compressor and in-vehicle switch. Can be fitted to both front and rear axles without compromising on-road performance. Note: All ARB Diff lockers require compressor which is available separately - BA 215

BA 204

P38



A.R.B. Compressor

Compressor for BA 204

BA 215

P38

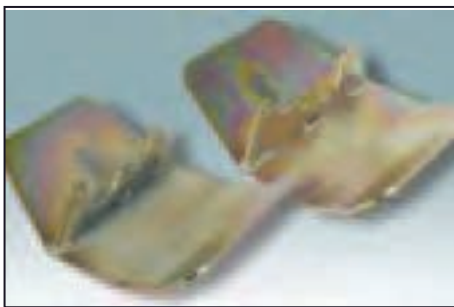


Spacer Ring

Required to allow fitment of Detroit True Trac Diff Locks on vehicles with a 4:7:1 ratio diff. Includes extended bolts, to suit relevant vehicles.

BA 205S

P38



Diff Guard - Slider Type

A very heavy duty product made from 4mm steel to offer sturdy protection for P38 Range Rovers. Zinc plated to resist corrosion. Bolts directly to the diff mounting bolts to protect case as well as acting as a slider.

BA 3133

Rear

P38

BA 3134

Front

P38

Dog Guard

Made from 2" wire mesh welded to frame for a rattle free construction. Black nylon coated - Easy to install and remove - Rear seat can be folded down without removing dog guard - Will fit both 2 and 4 door models.

BA 143

P38 (From 1995)



Moulded Boot Liner

As effective as usual boot liners but with a difference - these can be rolled up when not in use and stored in the vehicle. They spring back into shape when unrolled and they have 4" sides to keep the muck in.

BA 3141

P38



Heavy Duty Rubber Mats

These quality rubber mats are strong and waterproof. Their weight ensures that they do not move about in the vehicle and helps keep the original carpets clean.

BA 3508 Front
BA 3509 Rear

P38
P38



Set of 4 Mats

Velour mats for the passenger area

BA 082 Grey
BA 082B Beige

P38
P38



Rear Load Area Mat

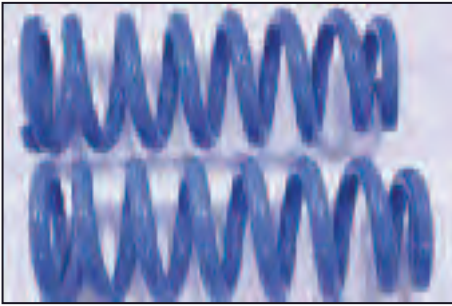
Velour mat for the rear load area

BA 082C Beige - No Changer

P38



Blue Springs



PART NUMBER	FITMENT	HEIGHT INCREASE	
BA 2106	Front	STD	
BA 2104	Rear	STD	
BA 2104	Front	+20mm	(Heavy load on Rear)
BA 2101	Rear	+20mm	
BA 2105	Front	+30mm	
BA 2102	Rear	+30mm	

Shock Absorbers



BRAND	FILL + TUBE TYPE	EXTENSION (MM)	P38	
			FRONT	REAR
Boge/Sachs	Oil	STD	STC1882	STC1881
Armstrong	Oil	STD	STC1882A	STC1881A
Monroe	Gas	STD	STC1882M	STC1881M
Bilstein	Gas	STD	BA 2122B	BA 2119B
Koni	Gas	0-25	STC1882K	STC1881K
Tuffback	Gas Heavy Duty	0-25	BA 2540	BA 2541

Steering Damper for P38



ANR2640 Armstrong Range Rover P38

Hub Bearing



FTC3223B Range Rover P38

Gearbox Bearing Kit



BK 0007 Suff J 13 Piece Kit
BK 0007A Suff K 13 Piece Kit

Service Kit for V8 4.0 and 4.6

Contains all the parts to complete a quick and efficient service
(Image for illustration purposes only)

Contents
 Oil Filter
 Air Filter
 Fuel Filter
 Pollen Filter
 Spark Plugs
 Sump Plug Washer

BK 0038 to VIN TA346793 and from WA376580 to WA385948



Service Kit for V8 4.0 and 4.6

Contains all the parts to complete a quick and efficient service
(Image for illustration purposes only)

Contents
 Oil Filter
 Air Filter
 Fuel Filter
 Pollen Filter
 Spark Plugs
 Sump Plug Washer

BK 0039 from VIN VA346794 to VA376579 and from WA385949



Service Kit for 2.5TD

Contains all the parts to complete a quick and efficient service
(Image for illustration purposes only)

Contents
 Oil Filter (Type A)
 Air Filter
 Fuel Filter
 Pollen Filter
 Sump Plug Washer

BK 0040 to engine 33978348 to type A (Dec 1995)



Service Kit for 2.5TD

Contains all the parts to complete a quick and efficient service
(Image for illustration purposes only)

Contents
 Oil Filter Type B
 Air Filter
 Fuel Filter
 Pollen Filter
 Sump Plug Washer

BK 0041 from engine 33988348 (Dec 1995) to VIN TA346793 type B



Service Kit for 2.5TD

Contains all the parts to complete a quick and efficient service
(Image for illustration purposes only)

Contents
 Oil Filter
 Air Filter
 Fuel Filter
 Pollen Filters
 Sump Plug Washer

BK 0042 from engine 33988348 (Dec 1995) from VIN TA346794 type B
BK 0042B from engine 33988348 (Dec 1995) from VIN TA346794 type A

